

# gateProtect GPA 400

A versatile server/firewall designed for small/medium-sized enterprises

The corporate world is evolving at a relentless pace, requiring ever greater flexibility, decentralisation and distribution of work, especially for companies providing services which may have production units in different parts of the world. This kind of organisational model must be supported by the appropriate IT tools, particularly when it comes to the corporate IT network and "making it safe". The German company gateProtect manufactures the firewall GPA 400, an xUTM appliance designed for a network of up to 250 users. Companies with fewer or more employees should take a look at the website [www.gateprotect.it](http://www.gateprotect.it) to find a more suitable solution.

disk, 1 GB of RAM and six network adaptors, four of 1 Gbps and two of 100 Mbps. Everything is housed in a separate, bright red rack module. Despite being based on Linux, it is not really designed for Linux since a control client has to be installed on a Windows computer in order to interact with the device. The gateProtect programmers, who have written most of the management software, are currently working on a multi-platform client which will enable access via Pinguino, with Mac OS X and with any other modern operating system. In the meantime, access can be provided by installing the client for Windows in a virtual device, which must be suitably configured to dialogue with the firewall.



The gateProtect Firewall Server is versatile and offers a wealth of functions, even if currently it can only be accessed with a Windows client.

## The Server

GPA 400 is quite simply a normal computer based on an Intel Desktop Board DG9650T motherboard and a Core2 Duo E2180 processor set at 2 GHz, mounted with a 160 GB hard

## Highly original

This server can carry out a number of network management and control functions, such as controlling traffic via e-mail generated by FTP, HTTP, SIP (a

VoIP protocol) and HTTPS connections, managing private virtual networks and much, much more. It can be connected to a number of subnetworks and can connect to the Internet in various ways, balancing the workload according to rules established by the user. It can of course also be used as a "simple" router plus firewall, but this would be a real shame as well as an unnecessary expense. Its unmistakable feature is its graphic interface, which is simple (for a systems engineer) and intuitive. Our network is subdivided according to the active services, the subnetworks and the users, and then "reconstructed" on the screen; each individual element can thus be traced at a glance and modified immediately, with just a few clicks of the mouse and the keyboard, and without getting lost in dozens of different applications or in interminable command lines. Since it is a Linux system through and through, it is obviously ready for updates and interventions by the administrator, who can also access the system from the console (though this is not recommended for safe-

ty reasons), by connecting a keyboard to the PS/2 port. The server is not of course equipped with removable memories such as floppy disks or DVD-ROMs, but these can always be used via a USB port.

gateProtect-registered users can download the operating system and software from the corporate website and transfer everything onto a USB key or CD-ROM; installation is extremely simple. **LXP**

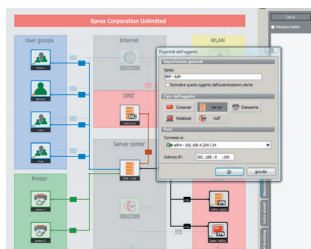


## Highlighted



### Multiple sockets

All the expansion connectors on the motherboard are taken up by the network cards which are used to connect to various subnetworks.



### Easy to use

Our network is made up not only of local computers but also of VPNs "scattered" over the Internet and its components are easy to modify.

## Review

### gateProtect GPA 400

**Manufacturer:**  
gateProtect AG Germany  
**Price:** 2.995 €

Features	8
Usability	8
Performance	9
Price / quality ratio	7

» An xUTM server/firewall with excellent performance and particularly interesting management software. It's just a pity that there is as yet no specific client for Linux.

Rating of  
Linux Pro

8